

**BusConnects Galway: Cross-City Link  
(University Road to Dublin Road)**

August 2022

# **Environmental Impact Assessment Report**

**Volume 1**  
Non Technical  
Summary

**BUS  
CONNECTS  
GALWAY**

SUSTAINABLE TRANSPORT FOR A BETTER CITY.

# General Arrangement Drawings





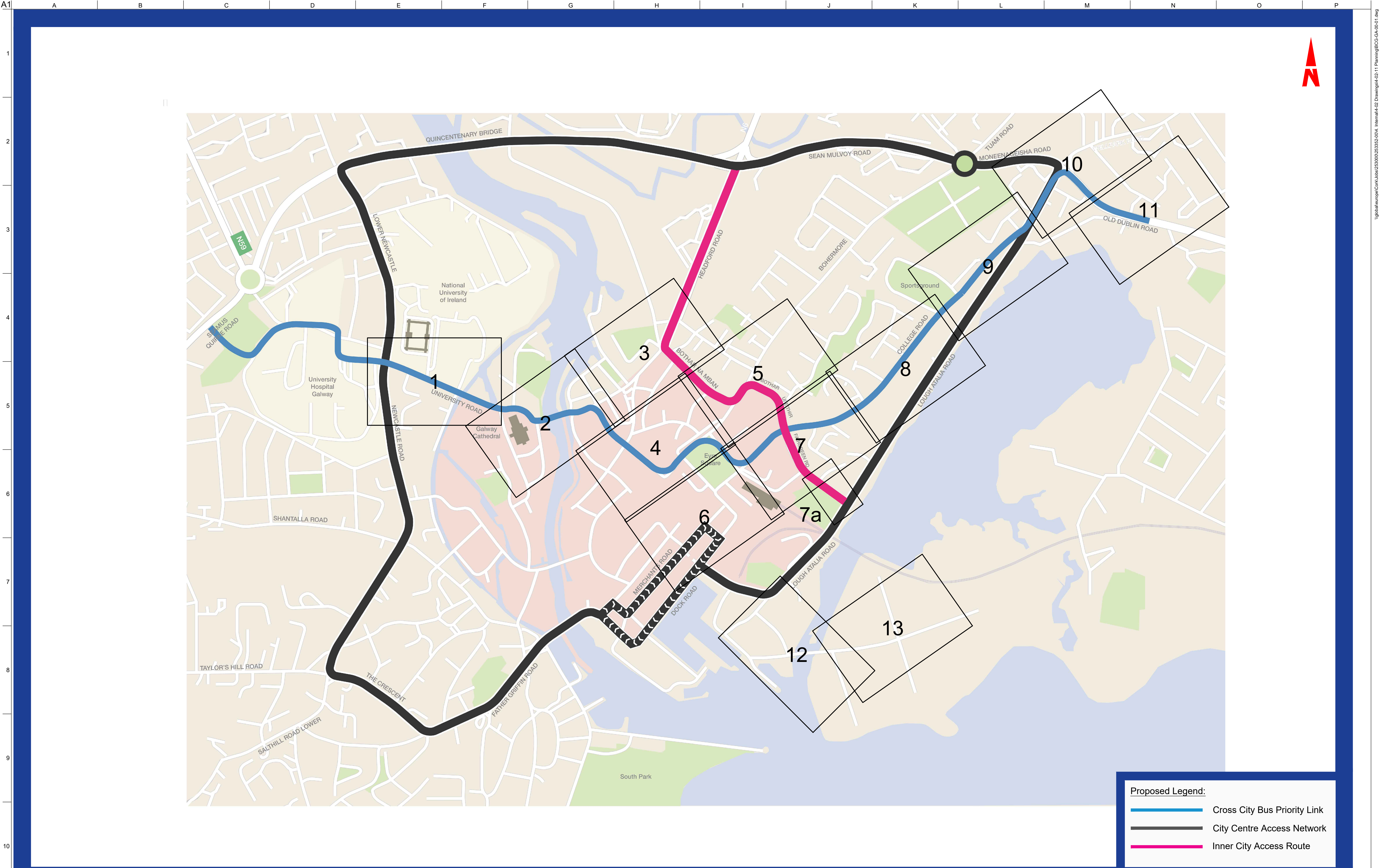


Figure 4.2 - Refer to Galway Transport Strategy Report

**Disclaimer**

a. © Galway City Council (GCC) 2022. This drawing is confidential and the copyright in it is owned by GCC. This drawing must not be either loaned, copied or otherwise reproduced in whole or in part or used for any purpose without the prior permission of GCC.

b. This drawing is to be used for the design element identified in the titlebox. Other information shown is to be considered indicative only. The drawing is to be read in conjunction with all other relevant design drawings.

c. O.S. data used for plans are printed under © Ordnance Survey Ireland Government of Ireland. All rights reserved. Licence Number EN 0002822 (Arup). All elevations are in metres and relate to OSI Geoid Model (OSGM15) Malin Head. All Co-ordinates are in Irish Transverse Mercator Grid (ITM) as defined by OSI active local GPS station.

d. Information concerning the position of apparatus shown on this drawing is based on drawings supplied by the utility owners and/or the utility works contractor, whilst every care has been taken in the preparation of this drawing, positions should be taken as approximate and are intended for general guidance only and no representation is made by the GCC as to the accuracy, completeness, sufficiency or otherwise of this drawing and the position of the apparatus. The information contained herein does not purport to be comprehensive or final as the apparatus is subject to being altered and/or superseded. Recipients should not rely on this information. Any liabilities are hereby expressly disclaimed.

e. The information contained herein has been provided by the GCC but does not purport to be comprehensive or final. Recipients should not rely on the information. Neither the GCC nor any of its directors, officers, employees, agents, stakeholders or advisers make any representation or warranty as to, or accept any liability or responsibility in relation to, the adequacy, accuracy, reasonableness or completeness of the information provided as part of this document or any matter on which the information is based (including but not limited to loss or damage arising as a result of reliance by recipients on the information or any part of it). Any liabilities are hereby expressly disclaimed.

**NTA**  
Údarás Náisiúnta Iompair  
National Transport Authority

PL01	31/08/22	BM	BB	DMcD
Issue for Planning				
Rev	Date	By	Chkd	Appd

Arup, One Albert Quay,  
Cork, T12 X8N6, Ireland  
Tel +353 (0)21 422 3200 Fax +353 (0)1 668 3169  
www.arup.ie

Client  
Galway City Council

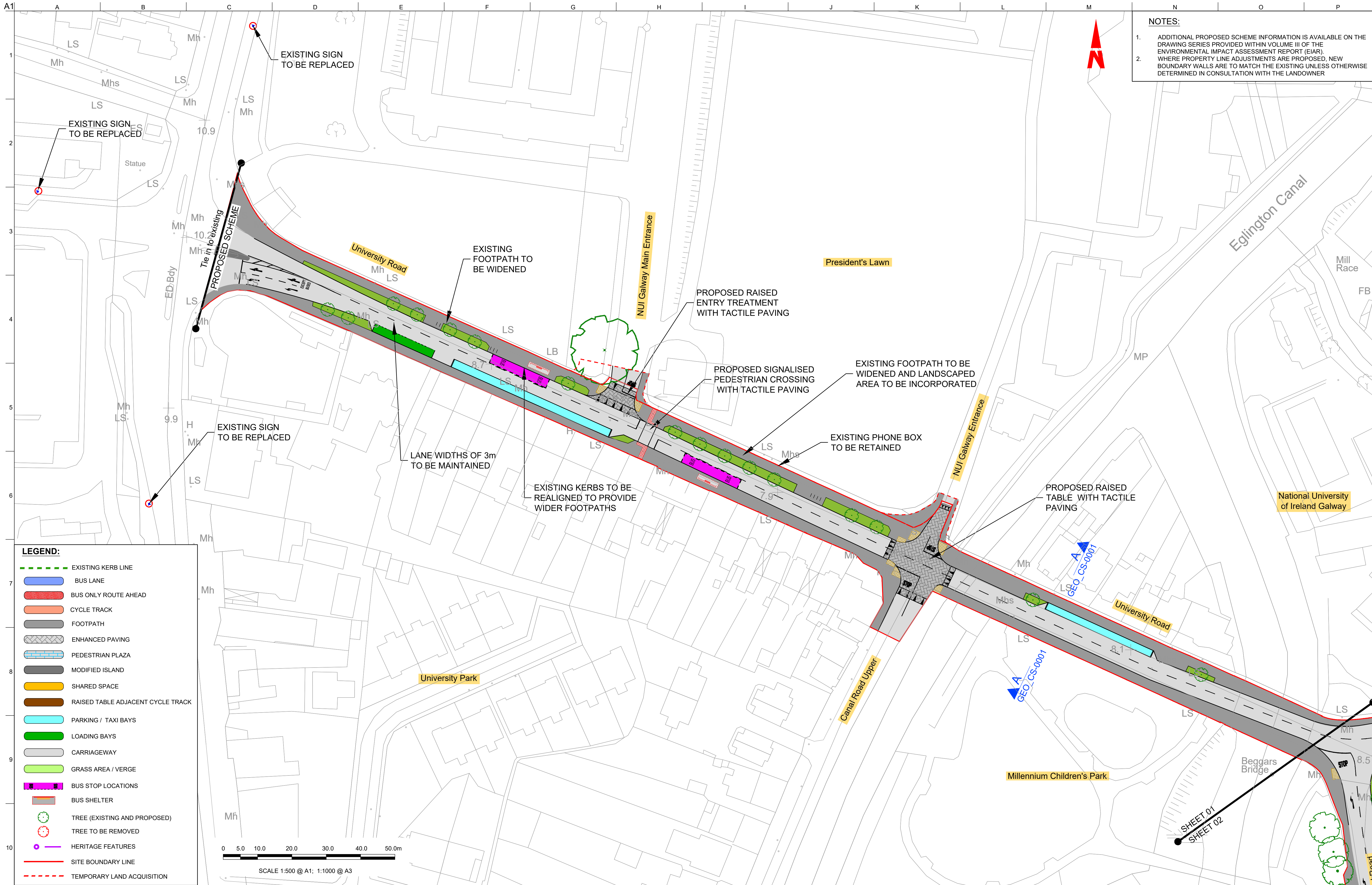
Project Title  
BusConnects Galway:  
Cross-City Link  
(University Road to Dublin Road)

Drawing Title  
General Arrangement  
Keyplan

Scale at A1  
NTS

Role	Transport Infrastructure
Suitability	Planning
Arup Job No	253352-00
Name	BCG-GA-00-00
Rev	PL01





**LEGEND:**

- EXISTING KERB LINE
- BUS LANE
- BUS ONLY ROUTE AHEAD
- CYCLE TRACK
- FOOTPATH
- ENHANCED PAVING
- PEDESTRIAN PLAZA
- MODIFIED ISLAND
- SHARED SPACE
- RAISED TABLE ADJACENT CYCLE TRACK
- PARKING / TAXI BAYS
- LOADING BAYS
- CARRIAGEWAY
- GRASS AREA / VERGE
- BUS STOP LOCATIONS
- BUS SHELTER
- TREE (EXISTING AND PROPOSED)
- TREE TO BE REMOVED
- HERITAGE FEATURES
- SITE BOUNDARY LINE
- TEMPORARY LAND ACQUISITION

**DISCLAIMER**

a. © Galway City Council (GCC) 2022. This drawing is confidential and the copyright in it is owned by GCC. This drawing must not be either loaned, copied or otherwise reproduced in whole or in part or used for any purpose without the prior permission of GCC.

b. This drawing is to be used for the design element identified in the titlebox. Other information shown is to be considered indicative only. The drawing is to be read in conjunction with all other relevant design drawings.

c. O.S. data used for plans are printed under © Ordnance Survey Ireland Government of Ireland. All rights reserved. Licence Number EN 0002822 (Anup). All elevations are in metres and relate to OSI Geoid Model (OSGM15) Mean Head. All Co-ordinates are in Irish Transverse Mercator Grid (ITM) as defined by OSI active local GPS station.

d. Information concerning the position of apparatus shown on this drawing is based on drawings supplied by the utility owners and/or the utility works contractor, whilst every care has been taken in the preparation of this drawing, positions should be taken as approximate and are intended for general guidance only and no representation is made by the GCC as to the accuracy, completeness, sufficiency or otherwise of this drawing and the position of the apparatus. The information contained herein does not purport to be comprehensive or final as the apparatus is subject to being altered and/or superseded. Recipients should not rely on this information. Any liabilities are hereby expressly disclaimed.

e. The information contained herein has been provided by the GCC but does not purport to be comprehensive or final. Recipients should not rely on the information. Neither the GCC nor any of its directors, officers, employees, agents, stakeholders or advisers make any representation or warranty as to, or accept any liability or responsibility in relation to, the adequacy, accuracy, reasonableness or completeness of the information provided as part of this document or any matter on which the information is based (including but not limited to loss or damage arising as a result of reliance by recipients on the information or any part of it). Any liabilities are hereby expressly disclaimed.

**ARUP**

One Albert Quay,  
Cork, T12 X8N6, Ireland  
Tel +353 (0)21 422 3200 Fax +353 (0)1 668 3169  
www.arup.ie

Client  
**Galway City Council**

Project Title  
**BusConnects Galway:  
Cross-City Link  
(University Road to Dublin Road)**

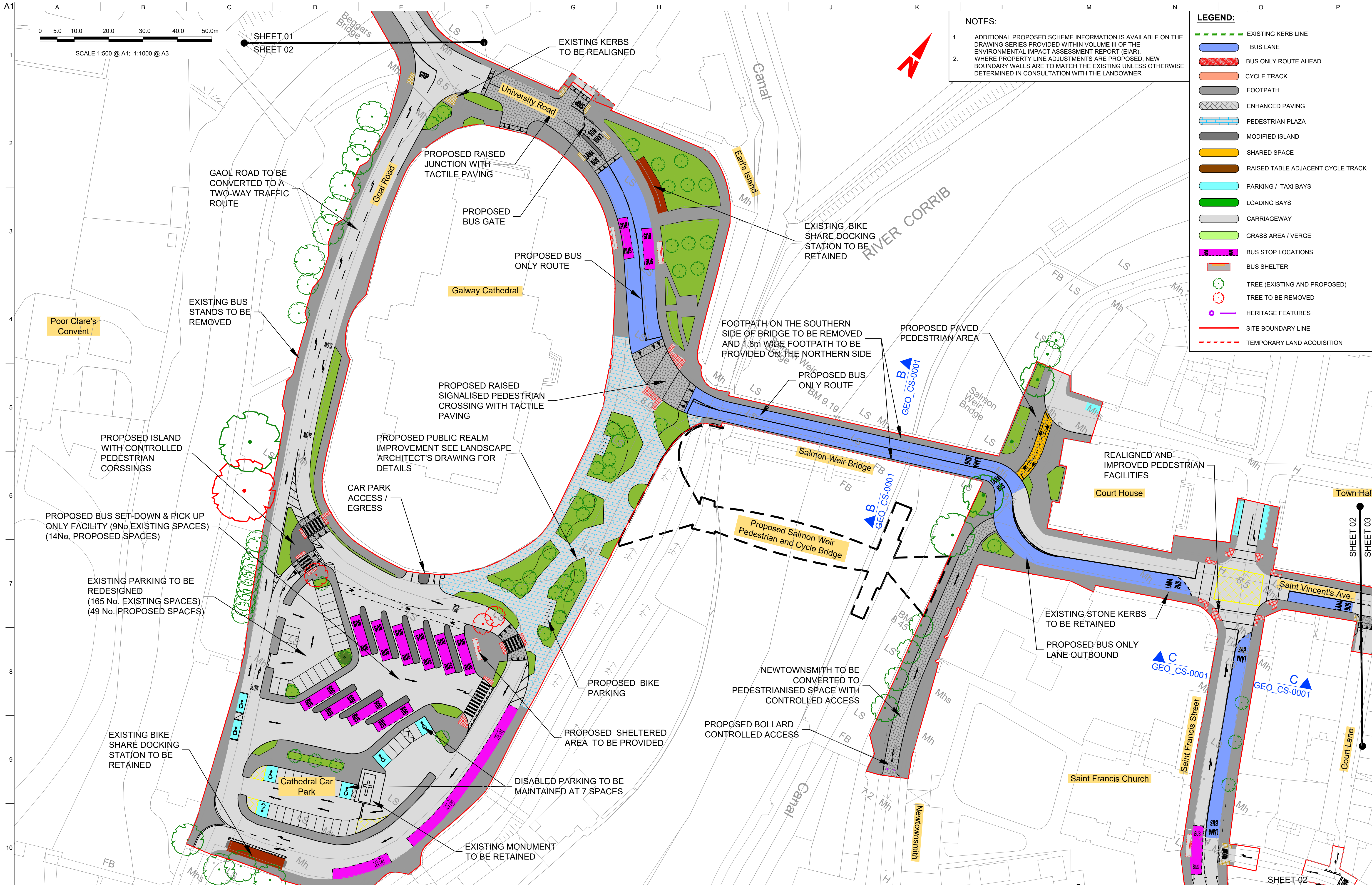
Drawing Title  
**General Arrangement**

Scale at A1 1:500 @ A1 ( 1:1000 @ A3)

Role	Transport Infrastructure
Suitability	Planning
Arup Job No	253352-00
Name	BCG-GA-00-01
Rev	PL01

PL01	31/08/22	BM	BB	DMcD
Issue for Planning				
Rev	Date	By	Chkd	Appd





Disclaimer

a. © Galway City Council (GCC) 2022. This drawing is confidential and the copyright in it is owned by GCC. This drawing must not be either loaned, copied or otherwise reproduced in whole or in part or used for any purpose without the prior permission of GCC.

b. This drawing is to be used for the design element identified in the titlebox. Other information shown is to be considered indicative only. The drawing is to be read in conjunction with all other relevant design drawings.

c. O.S. data used for plans are printed under © Ordnance Survey Ireland Government of Ireland. All rights reserved. Licence Number EN 0002822 (Arup). All elevations are in metres and relate to OSI Geoid Model (OSGM15) Mean Sea Level. All Co-ordinates are in Irish Transverse Mercator Grid (ITM) as defined by OSI active local GPS station.

d. Information concerning the position of apparatus shown on this drawing is based on drawings supplied by the utility owners and/or the utility works contractor, whilst every care has been taken in the preparation of this drawing, positions should be taken as approximate and are intended for general guidance only and no representation is made by the GCC as to the accuracy, completeness, sufficiency or otherwise of this drawing and the position of the apparatus. The information contained herein does not purport to be comprehensive or final as the apparatus is subject to being altered and/or superseded. Recipients should not rely on this information. Any liabilities are hereby expressly disclaimed.

e. The information contained herein has been provided by the GCC but does not purport to be comprehensive or final. Recipients should not rely on the information. Neither the GCC nor any of its directors, officers, employees, agents, stakeholders or advisers make any representation or warranty as to, or accept any liability or responsibility in relation to, the adequacy, accuracy, reasonableness or completeness of the information provided as part of this document or any matter on which the information is based (including but not limited to loss or damage arising as a result of reliance by recipients on the information or any part of it). Any liabilities are hereby expressly disclaimed.

**ARUP**

Arup, One Albert Quay,  
Cork, T12 X8N6, Ireland  
Tel +353 (0)21 422 3200 Fax +353 (0)1 668 3169  
www.arup.ie

Client  
Galway City Council

Project Title  
BusConnects Galway:  
Cross-City Link  
(University Road to Dublin Road)

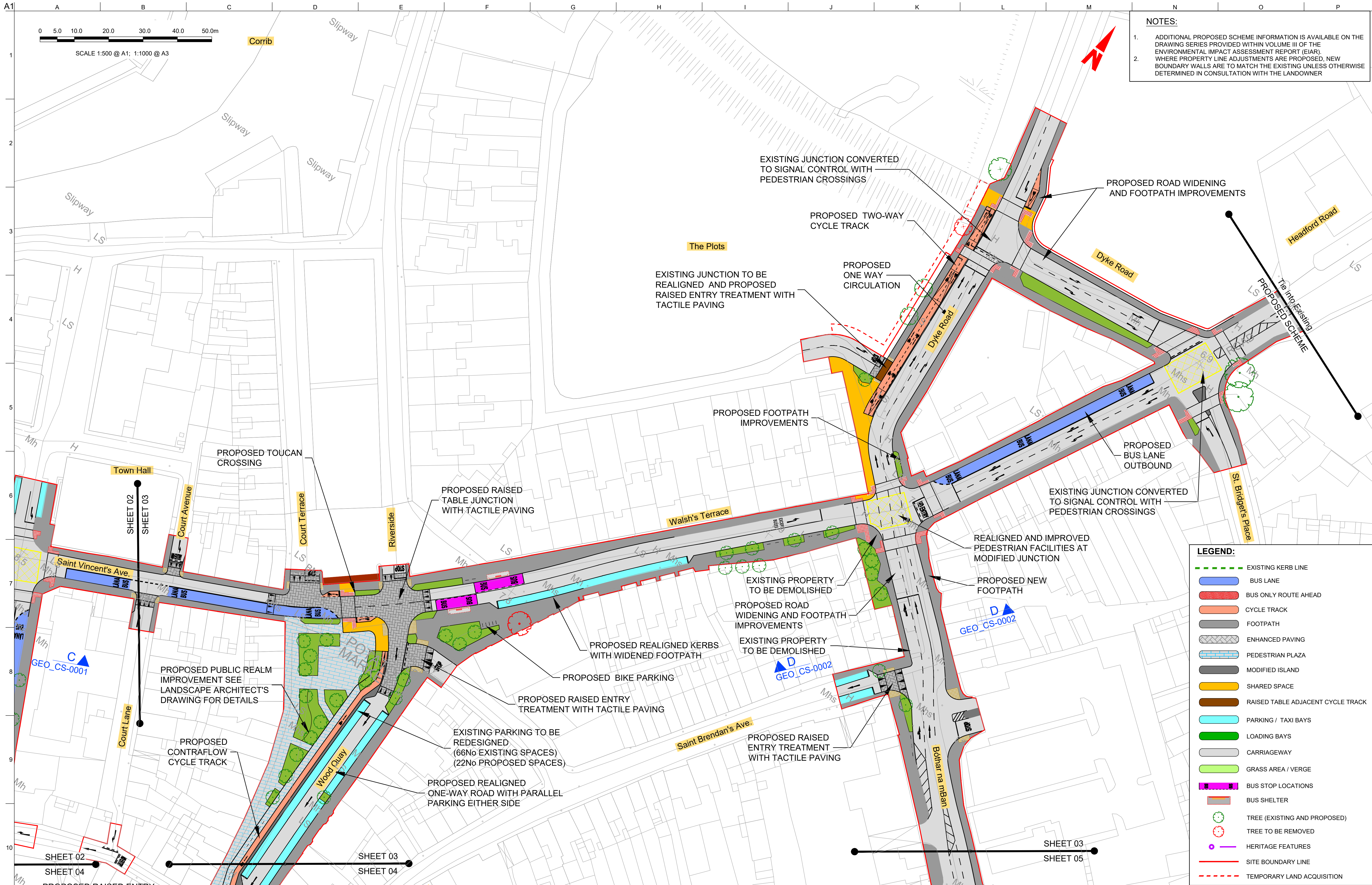
Drawing Title  
General Arrangement

Sheet 02 of 13

Scale at A1 1:500 @ A1 ( 1:1000 @ A3)

Role	Transport Infrastructure
Suitability	Planning
Arup Job No	253352-00
Name	BCG-GA-00-02
Rev	PL01





- NOTES:**
1. ADDITIONAL PROPOSED SCHEME INFORMATION IS AVAILABLE ON THE DRAWING SERIES PROVIDED WITHIN VOLUME III OF THE ENVIRONMENTAL IMPACT ASSESSMENT REPORT (EIAR).
  2. WHERE PROPERTY LINE ADJUSTMENTS ARE PROPOSED, NEW BOUNDARY WALLS ARE TO MATCH THE EXISTING UNLESS OTHERWISE DETERMINED IN CONSULTATION WITH THE LANDOWNER

- LEGEND:**
- EXISTING KERB LINE
  - BUS LANE
  - BUS ONLY ROUTE AHEAD
  - CYCLE TRACK
  - FOOTPATH
  - ENHANCED PAVING
  - PEDESTRIAN PLAZA
  - MODIFIED ISLAND
  - SHARED SPACE
  - RAISED TABLE ADJACENT CYCLE TRACK
  - PARKING / TAXI BAYS
  - LOADING BAYS
  - CARRIAGEWAY
  - GRASS AREA / VERGE
  - BUS STOP LOCATIONS
  - BUS SHELTER
  - TREE (EXISTING AND PROPOSED)
  - TREE TO BE REMOVED
  - HERITAGE FEATURES
  - SITE BOUNDARY LINE
  - TEMPORARY LAND ACQUISITION

Disclaimer

a. © Galway City Council (GCC) 2022. This drawing is confidential and the copyright in it is owned by GCC. This drawing must not be either loaned, copied or otherwise reproduced in whole or in part or used for any purpose without the prior permission of GCC.

b. This drawing is to be used for the design element identified in the titlebox. Other information shown is to be considered indicative only. The drawing is to be read in conjunction with all other relevant design drawings.

c. O.S. data used for plans are printed under © Ordnance Survey Ireland Government of Ireland. All rights reserved. Licence Number EN 0002822 (Aug). All elevations are in metres and relate to OSI Geoid Model (OSGM15) Mean Sea Level. All Co-ordinates are in Irish Transverse Mercator Grid (ITM) as defined by OSI active local GPS station.

d. Information concerning the position of apparatus shown on this drawing is based on drawings supplied by the utility owners and/or the utility works contractor, whilst every care has been taken in the preparation of this drawing, positions should be taken as approximate and are intended for general guidance only and no representation is made by the GCC as to the accuracy, completeness, sufficiency or otherwise of this drawing and the position of the apparatus. The information contained herein does not purport to be comprehensive or final as the apparatus is subject to being altered and/or superseded. Recipients should not rely on this information. Any liabilities are hereby expressly disclaimed.

e. The information contained herein has been provided by the GCC but does not purport to be comprehensive or final. Recipients should not rely on the information. Neither the GCC nor any of its directors, officers, employees, agents, stakeholders or advisers make any representation or warranty as to, or accept any liability or responsibility in relation to, the adequacy, accuracy, reasonableness or completeness of the information provided as part of this document or any matter on which the information is based (including but not limited to loss or damage arising as a result of reliance by recipients on the information or any part of it). Any liabilities are hereby expressly disclaimed.

**ARUP**

Arup, One Albert Quay,  
Cork, T12 X8N6, Ireland  
Tel +353 (0)21 422 3200 Fax +353 (0)1 668 3169  
www.arup.ie

Client  
**Galway City Council**

Project Title  
**BusConnects Galway:  
Cross-City Link  
(University Road to Dublin Road)**

Drawing Title  
**General Arrangement**

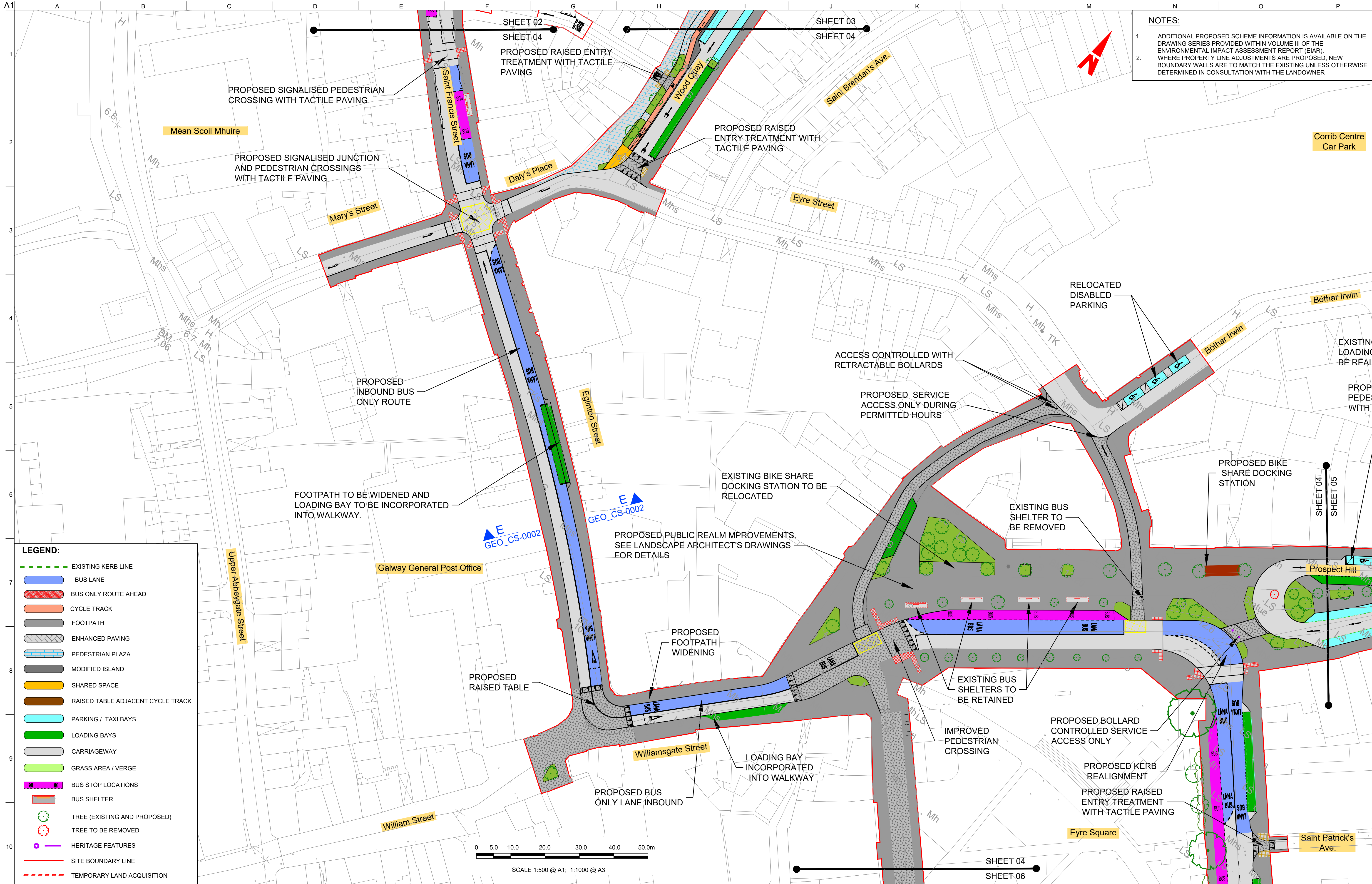
Scale at A1  
**1:500 @ A1 ( 1:1000 @ A3)**

Role <b>Transport Infrastructure</b>	Rev <b>PL01</b>
Suitability <b>Planning</b>	
Arup Job No <b>253352-00</b>	
Name <b>BCG-GA-00-03</b>	

PL01	31/08/22	BM	BB	DMcD
Issue for Planning				
Rev	Date	By	Chkd	Appd

Map reproduced from Ordnance Survey Ireland Licence No. EN 0002822  
© Ordnance Survey Ireland/ Government of Ireland.



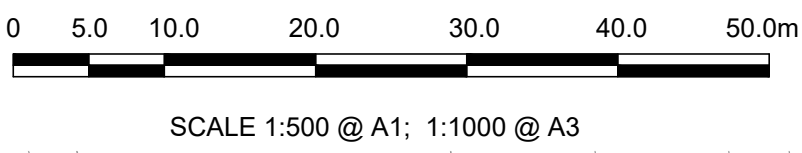


**NOTES:**

1. ADDITIONAL PROPOSED SCHEME INFORMATION IS AVAILABLE ON THE DRAWING SERIES PROVIDED WITHIN VOLUME III OF THE ENVIRONMENTAL IMPACT ASSESSMENT REPORT (EIAR).

2. WHERE PROPERTY LINE ADJUSTMENTS ARE PROPOSED, NEW BOUNDARY WALLS ARE TO MATCH THE EXISTING UNLESS OTHERWISE DETERMINED IN CONSULTATION WITH THE LANDOWNER

- LEGEND:**
- EXISTING KERB LINE
  - BUS LANE
  - BUS ONLY ROUTE AHEAD
  - CYCLE TRACK
  - FOOTPATH
  - ENHANCED PAVING
  - PEDESTRIAN PLAZA
  - MODIFIED ISLAND
  - SHARED SPACE
  - RAISED TABLE ADJACENT CYCLE TRACK
  - PARKING / TAXI BAYS
  - LOADING BAYS
  - CARRIAGEWAY
  - GRASS AREA / VERGE
  - BUS STOP LOCATIONS
  - BUS SHELTER
  - TREE (EXISTING AND PROPOSED)
  - TREE TO BE REMOVED
  - HERITAGE FEATURES
  - SITE BOUNDARY LINE
  - TEMPORARY LAND ACQUISITION



**USCIB/CMR**

a. © Galway City Council (GCC) 2022. This drawing is confidential and the copyright in it is owned by GCC. This drawing must not be either loaned, copied or otherwise reproduced in whole or in part or used for any purpose without the prior permission of GCC.

b. This drawing is to be used for the design element identified in the titlebox. Other information shown is to be considered indicative only. The drawing is to be read in conjunction with all other relevant design drawings.

c. O.S. data used for plans are printed under © Ordnance Survey Ireland Government of Ireland. All rights reserved. Licence Number EN 0002822 (Arup). All elevations are in metres and relate to OSI Geoid Model (OSGM15) Mean Head. All Co-ordinates are in Irish Transverse Mercator Grid (ITM) as defined by OSI active local GPS station.

d. Information concerning the position of apparatus shown on this drawing is based on drawings supplied by the utility owners and/or the utility works contractor, whilst every care has been taken in the preparation of this drawing, positions should be taken as approximate and are intended for general guidance only and no representation is made by the GCC as to the accuracy, completeness, sufficiency or otherwise of this drawing and the position of the apparatus. The information contained herein does not purport to be comprehensive or final as the apparatus is subject to being altered and/or suspended. Recipients should not rely on this information. Any liabilities are hereby expressly disclaimed.

e. The information contained herein has been provided by the GCC but does not purport to be comprehensive or final. Recipients should not rely on the information. Neither the GCC nor any of its directors, officers, employees, agents, stakeholders or advisers make any representation or warranty as to, or accept any liability or responsibility in relation to, the adequacy, accuracy, reasonableness or completeness of the information provided as part of this document or any matter on which the information is based (including but not limited to loss or damage arising as a result of reliance by recipients on the information or any part of it). Any liabilities are hereby expressly disclaimed.

**ARUP**

Arup, One Albert Quay,  
Cork, T12 X8N6, Ireland  
Tel +353 (0)21 422 3200 Fax +353 (0)1 668 3169  
www.arup.ie

Client  
**Galway City Council**

Project Title  
**BusConnects Galway:  
Cross-City Link  
(University Road to Dublin Road)**

Drawing Title  
**General Arrangement**

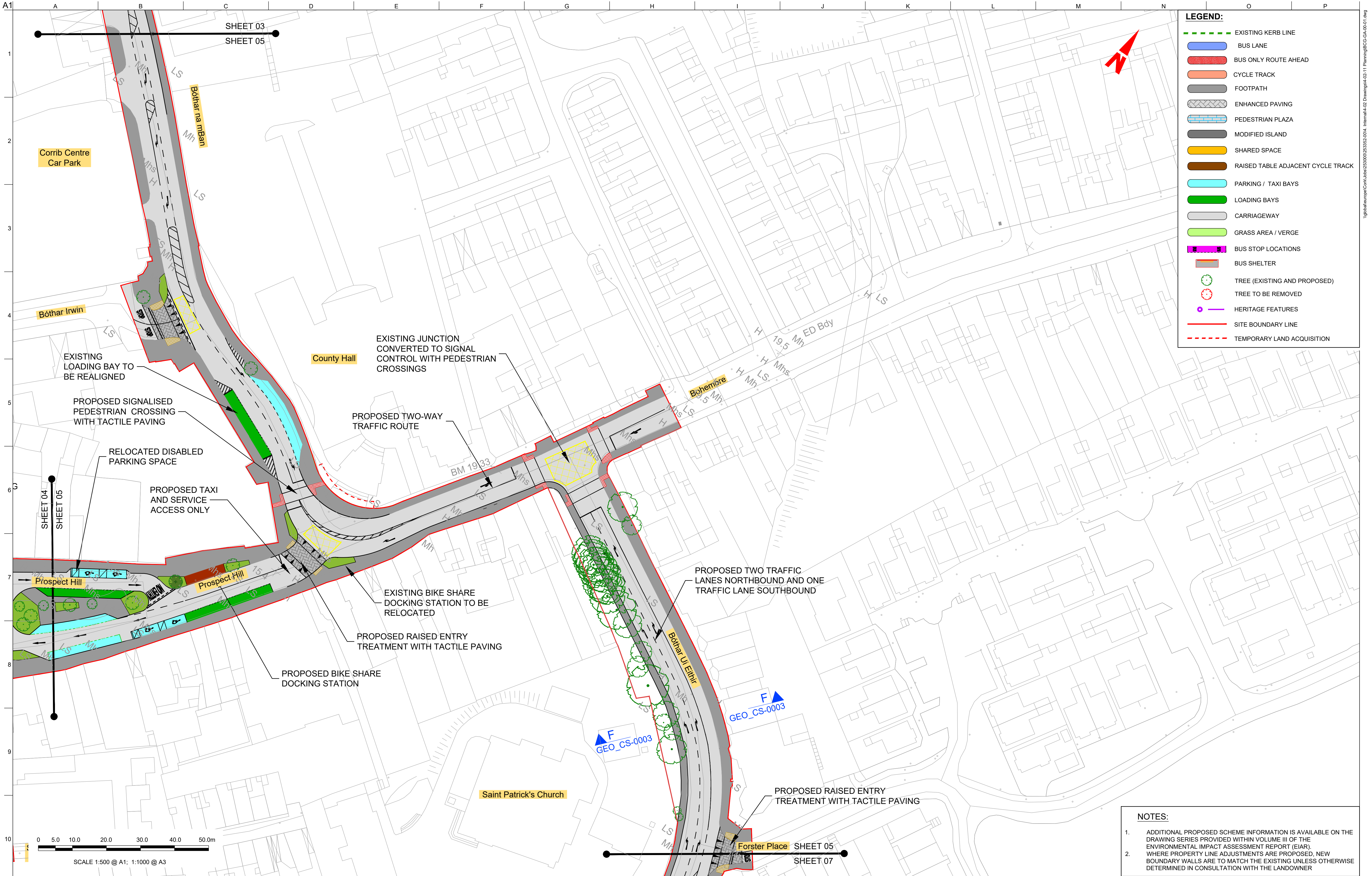
Scale at A1  
**1:500 @ A1 ( 1:1000 @ A3)**

Role	Transport Infrastructure
Suitability	Planning
Arup Job No	<b>253352-00</b>
Name	<b>BCG-GA-00-04</b>
Rev	<b>PL01</b>

PL01	31/08/22	BM	BB	DMcD
Issue for Planning				
Rev	Date	By	Chkd	Appd

Map reproduced from Ordnance Survey Ireland Licence No. EN 0002822  
© Ordnance Survey Ireland/ Government of Ireland.





**Disclaimer**

a. © Galway City Council (GCC) 2022. This drawing is confidential and the copyright in it is owned by GCC. This drawing must not be either loaned, copied or otherwise reproduced in whole or in part or used for any purpose without the prior permission of GCC.

b. This drawing is to be used for the design element identified in the titlebox. Other information shown is to be considered indicative only. The drawing is to be read in conjunction with all other relevant design drawings.

c. O.S. data used for plans are printed under © Ordnance Survey Ireland Government of Ireland. All rights reserved. Licence Number EN 0002822 (Arup). All elevations are in metres and relate to OSI Geoid Model (OSGM15) Mean High Water. All Co-ordinates are in Irish Transverse Mercator Grid (ITM) as defined by OSI active local GPS station.

d. Information concerning the position of apparatus shown on this drawing is based on drawings supplied by the utility owners and/or the utility works contractor, whilst every care has been taken in the preparation of this drawing, positions should be taken as approximate and are intended for general guidance only and no representation is made by the GCC as to the accuracy, completeness, sufficiency or otherwise of this drawing and the position of the apparatus. The information contained herein does not purport to be comprehensive or final as the apparatus is subject to being altered and/or superseded. Recipients should not rely on this information. Any liabilities are hereby expressly disclaimed.

e. The information contained herein has been provided by the GCC but does not purport to be comprehensive or final. Recipients should not rely on the information. Neither the GCC nor any of its directors, officers, employees, agents, stakeholders or advisers make any representation or warranty as to, or accept any liability or responsibility in relation to, the adequacy, accuracy, reasonableness or completeness of the information provided as part of this document or any matter on which the information is based (including but not limited to loss or damage arising as a result of reliance by recipients on the information or any part of it). Any liabilities are hereby expressly disclaimed.

**ARUP**

Arup, One Albert Quay,  
Cork, T12 X8N6, Ireland  
Tel +353 (0)21 422 3200 Fax +353 (0)1 668 3169  
www.arup.ie

Client  
**Galway City Council**

Project Title  
**BusConnects Galway:  
Cross-City Link  
(University Road to Dublin Road)**

Drawing Title  
**General Arrangement**

Scale at A1 **1:500 @ A1 ( 1:1000 @ A3)**

Role	Transport Infrastructure
Suitability	Planning
Arup Job No	<b>253352-00</b>
Name	<b>BCG-GA-00-05</b>
Rev	<b>PL01</b>

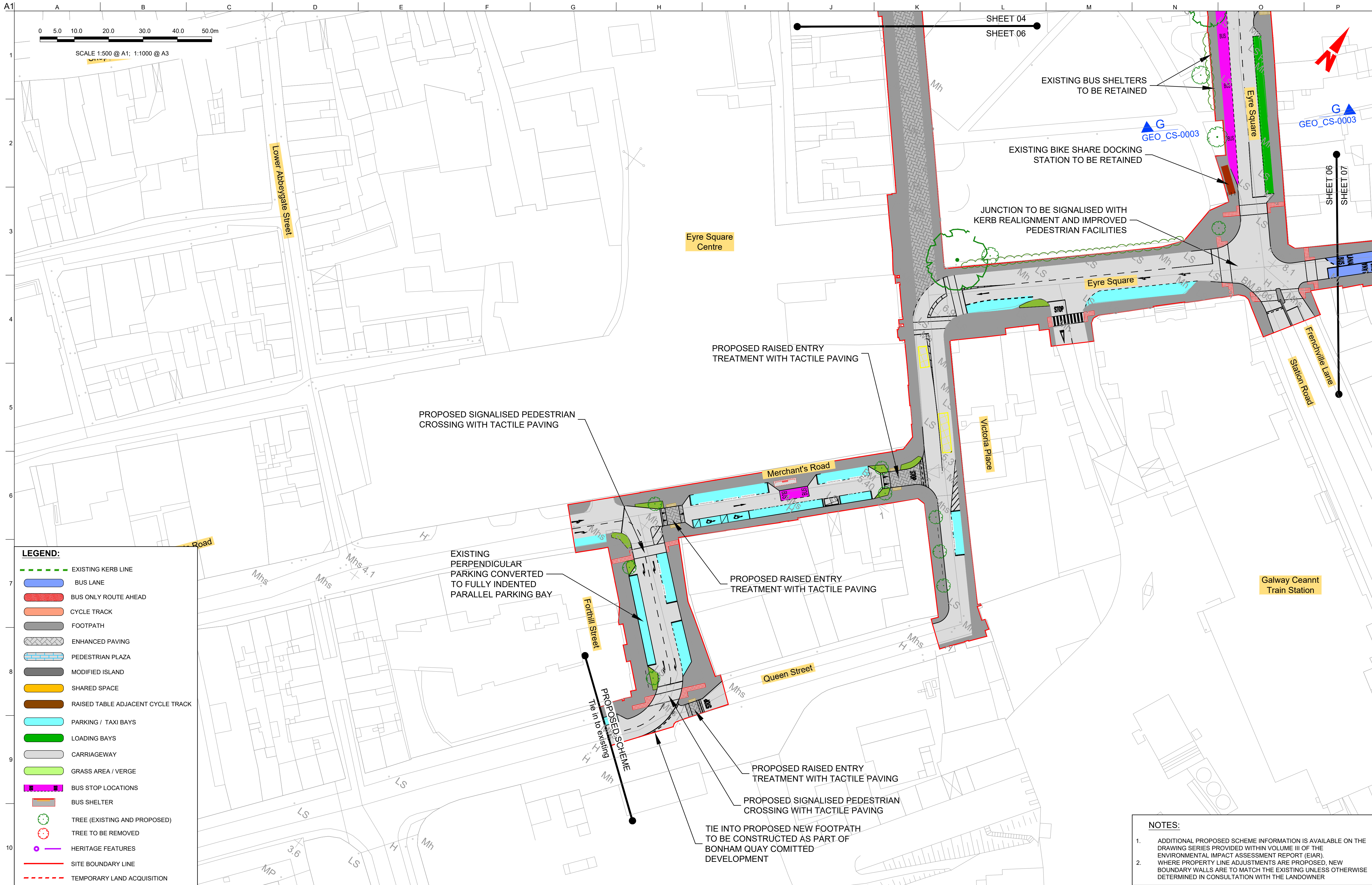
PL01	31/08/22	BM	BB	DMcD
Issue for Planning				
Rev	Date	By	Chkd	Appd

Map reproduced from Ordnance Survey Ireland Licence No. EN 0002822  
© Ordnance Survey Ireland/ Government of Ireland.

Do not scale

© Arup





LEGEND:

- EXISTING KERB LINE
- BUS LANE
- BUS ONLY ROUTE AHEAD
- CYCLE TRACK
- FOOTPATH
- ENHANCED PAVING
- PEDESTRIAN PLAZA
- MODIFIED ISLAND
- SHARED SPACE
- RAISED TABLE ADJACENT CYCLE TRACK
- PARKING / TAXI BAYS
- LOADING BAYS
- CARRIAGEWAY
- GRASS AREA / VERGE
- BUS STOP LOCATIONS
- BUS SHELTER
- TREE (EXISTING AND PROPOSED)
- TREE TO BE REMOVED
- HERITAGE FEATURES
- SITE BOUNDARY LINE
- TEMPORARY LAND ACQUISITION

NOTES:

- ADDITIONAL PROPOSED SCHEME INFORMATION IS AVAILABLE ON THE DRAWING SERIES PROVIDED WITHIN VOLUME III OF THE ENVIRONMENTAL IMPACT ASSESSMENT REPORT (EIAR).
- WHERE PROPERTY LINE ADJUSTMENTS ARE PROPOSED, NEW BOUNDARY WALLS ARE TO MATCH THE EXISTING UNLESS OTHERWISE DETERMINED IN CONSULTATION WITH THE LANDOWNER

a. © Galway City Council (GCC) 2022. This drawing is confidential and the copyright in it is owned by GCC. This drawing must not be either loaned, copied or otherwise reproduced in whole or in part or used for any purpose without the prior permission of GCC.

b. This drawing is to be used for the design element identified in the titlebox. Other information shown is to be considered indicative only. The drawing is to be read in conjunction with all other relevant design drawings.

c. O.S. data used for plans are printed under © Ordnance Survey Ireland Government of Ireland. All rights reserved. Licence Number EN 0002822 (Arup). All elevations are in metres and relate to OSI Geoid Model (OSGM15) Mean Head. All Co-ordinates are in Irish Transverse Mercator Grid (ITM) as defined by OSI active local GPS station.

d. The information contained herein has been provided by the GCC but does not purport to be comprehensive or final. Recipients should not rely on the information. Neither the GCC nor any of its directors, officers, employees, agents, stakeholders or advisers make any representation or warranty as to, or accept any liability or responsibility in relation to, the adequacy, accuracy, reasonableness or completeness of the information provided as part of this document or any matter on which the information is based (including but not limited to loss or damage arising as a result of reliance by recipients on the information or any part of it). Any liabilities are hereby expressly disclaimed.

e. The information contained herein has been provided by the GCC but does not purport to be comprehensive or final. Recipients should not rely on the information. Neither the GCC nor any of its directors, officers, employees, agents, stakeholders or advisers make any representation or warranty as to, or accept any liability or responsibility in relation to, the adequacy, accuracy, reasonableness or completeness of the information provided as part of this document or any matter on which the information is based (including but not limited to loss or damage arising as a result of reliance by recipients on the information or any part of it). Any liabilities are hereby expressly disclaimed.



PL01	31/08/22	BM	BB	DMcD
Issue for Planning				
Rev	Date	By	Chkd	Appd

ARUP

Arup, One Albert Quay,  
Cork, T12 X8N6, Ireland  
Tel +353 (0)21 422 3200 Fax +353 (0)1 668 3169  
www.arup.ie



Client  
Galway City Council

Project Title  
BusConnects Galway:  
Cross-City Link  
(University Road to Dublin Road)

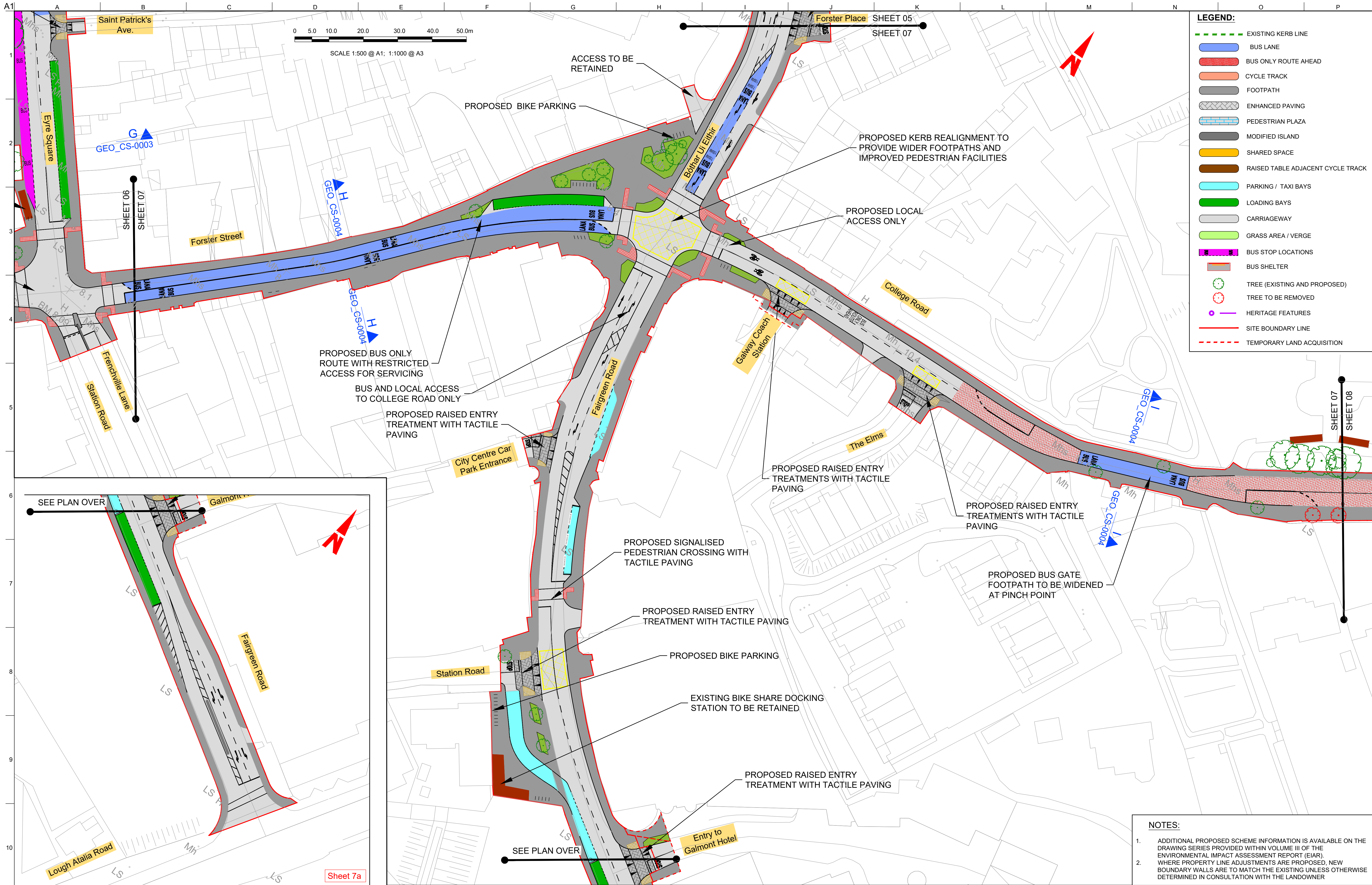


Drawing Title  
General Arrangement

Sheet 06 of 13

Scale at A1	1:500 @ A1 ( 1:1000 @ A3)
Role	Transport Infrastructure
Suitability	Planning
Arup Job No	253352-00
Name	BCG-GA-00-06
Rev	PL01



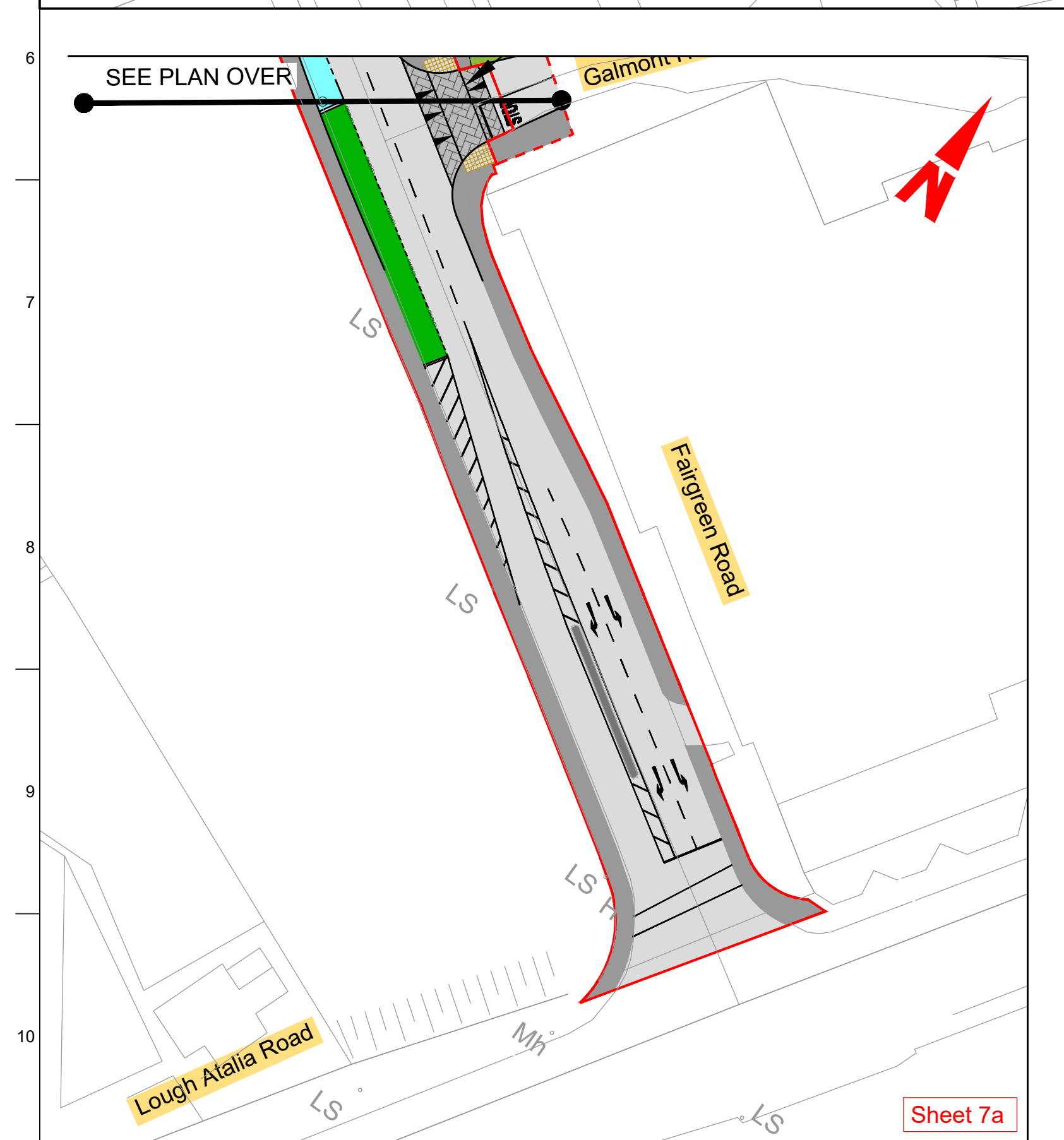


**LEGEND:**

- EXISTING KERB LINE
- BUS LANE
- BUS ONLY ROUTE AHEAD
- CYCLE TRACK
- FOOTPATH
- ENHANCED PAVING
- PEDESTRIAN PLAZA
- MODIFIED ISLAND
- SHARED SPACE
- RAISED TABLE ADJACENT CYCLE TRACK
- PARKING / TAXI BAYS
- LOADING BAYS
- CARRIAGEWAY
- GRASS AREA / VERGE
- BUS STOP LOCATIONS
- BUS SHELTER
- TREE (EXISTING AND PROPOSED)
- TREE TO BE REMOVED
- HERITAGE FEATURES
- SITE BOUNDARY LINE
- TEMPORARY LAND ACQUISITION

**NOTES:**

- ADDITIONAL PROPOSED SCHEME INFORMATION IS AVAILABLE ON THE DRAWING SERIES PROVIDED WITHIN VOLUME III OF THE ENVIRONMENTAL IMPACT ASSESSMENT REPORT (EIAR).
- WHERE PROPERTY LINE ADJUSTMENTS ARE PROPOSED, NEW BOUNDARY WALLS ARE TO MATCH THE EXISTING UNLESS OTHERWISE DETERMINED IN CONSULTATION WITH THE LANDOWNER



**Disclaimer**

a. © Galway City Council (GCC) 2022. This drawing is confidential and the copyright in it is owned by GCC. This drawing must not be either loaned, copied or otherwise reproduced in whole or in part or used for any purpose without the prior permission of GCC.

b. This drawing is to be used for the design element identified in the titlebox. Other information shown is to be considered indicative only. The drawing is to be read in conjunction with all other relevant design drawings.

c. O.S. data used for plans are printed under © Ordnance Survey Ireland Government of Ireland. All rights reserved. Licence Number EN 0002822 (Arup). All elevations are in metres and relate to OSI Geoid Model (OSGM15) Malin Head. All Co-ordinates are in Irish Transverse Mercator Grid (ITM) as defined by OSI active local GPS station.

d. Information concerning the position of apparatus shown on this drawing is based on drawings supplied by the utility owners and/or the utility works contractor, whilst every care has been taken in the preparation of this drawing, positions should be taken as approximate and are intended for general guidance only and no representation is made by the GCC as to the accuracy, completeness, sufficiency or otherwise of this drawing and the position of the apparatus. The information contained herein does not purport to be comprehensive or final as the apparatus is subject to being altered and/or superseded. Recipients should not rely on this information. Any liabilities are hereby expressly disclaimed.

e. The information contained herein has been provided by the GCC but does not purport to be comprehensive or final. Recipients should not rely on the information. Neither the GCC nor any of its directors, officers, employees, agents, stakeholders or advisers make any representation or warranty as to, or accept any liability or responsibility in relation to, the adequacy, accuracy, reasonableness or completeness of the information provided as part of this document or any matter on which the information is based (including but not limited to loss or damage arising as a result of reliance by recipients on the information or any part of it). Any liabilities are hereby expressly disclaimed.

**ARUP**

Arup One Albert Quay,  
Cork, T12 X8N6, Ireland  
Tel +353 (0)21 422 3200 Fax +353 (0)1 668 3169  
www.arup.ie

Client  
**Galway City Council**

Project Title  
**BusConnects Galway:  
Cross-City Link  
(University Road to Dublin Road)**

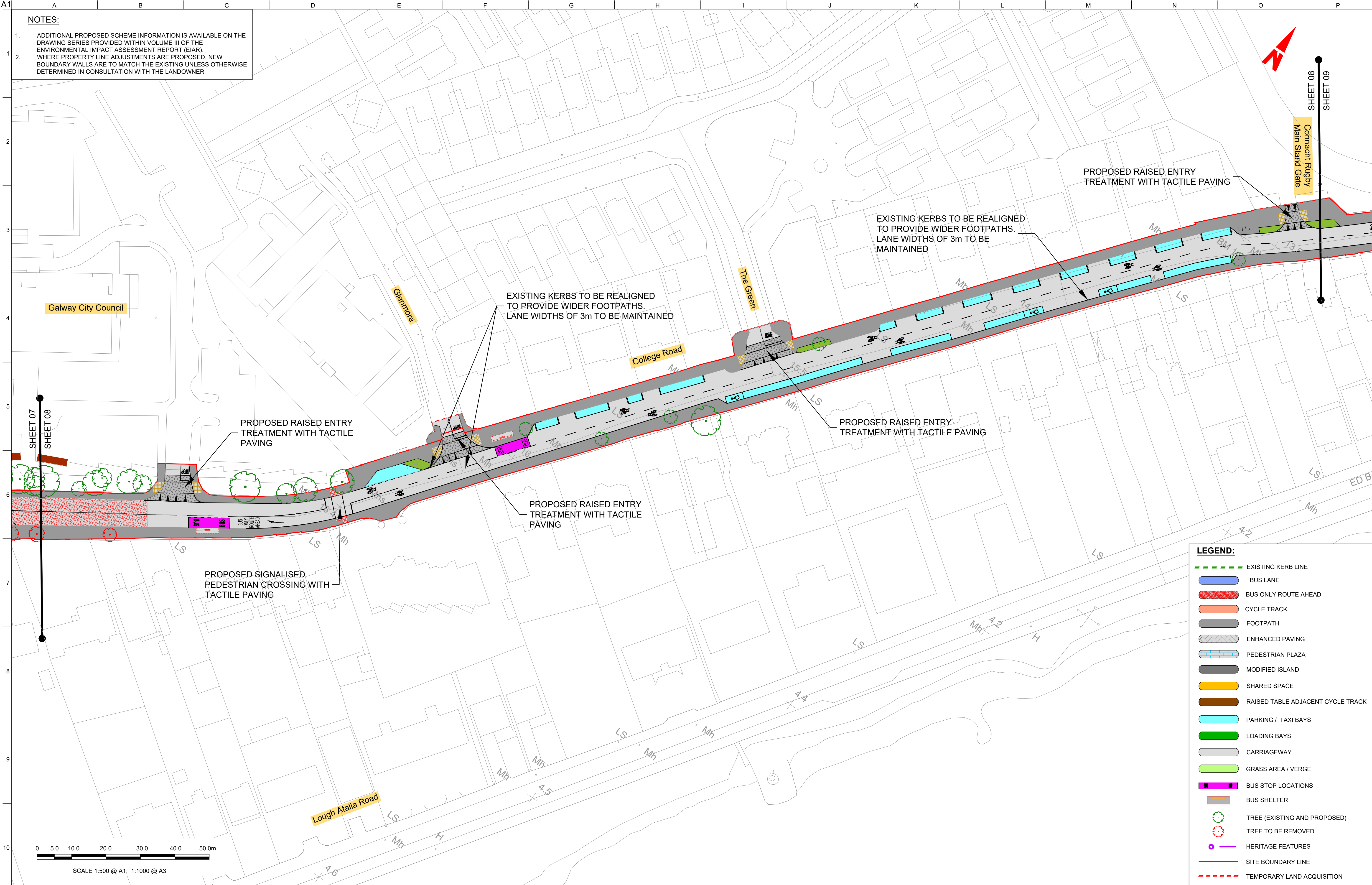
Drawing Title  
**General Arrangement**

Scale at A1 **1:500 @ A1 ( 1:1000 @ A3)**

Role	Transport Infrastructure
Suitability	Planning
Arup Job No	<b>253352-00</b>
Name	<b>BCG-GA-00-07</b>
Rev	<b>PL01</b>

PL01	31/08/22	BM	BB	DMcD
Issue for Planning				
Rev	Date	By	Chkd	Appd





**Disclaimer**

a. © Galway City Council (GCC) 2022. This drawing is confidential and the copyright in it is owned by GCC. This drawing must not be either loaned, copied or otherwise reproduced in whole or in part or used for any purpose without the prior permission of GCC.

b. This drawing is to be used for the design element identified in the titlebox. Other information shown is to be considered indicative only. The drawing is to be read in conjunction with all other relevant design drawings.

c. O.S. data used for plans are printed under © Ordnance Survey Ireland Government of Ireland. All rights reserved. Licence Number EN 0002822 (Arup). All elevations are in metres and relate to OSI Geoid Model (OSGM15) Mean Sea Level. All Co-ordinates are in Irish Transverse Mercator Grid (ITM) as defined by OSI active local GPS station.

d. Information concerning the position of apparatus shown on this drawing is based on drawings supplied by the utility owners and/or the utility works contractor, whilst every care has been taken in the preparation of this drawing, positions should be taken as approximate and are intended for general guidance only and no representation is made by the GCC as to the accuracy, completeness, sufficiency or otherwise of this drawing and the position of the apparatus. The information contained herein does not purport to be comprehensive or final as the apparatus is subject to being altered and/or superseded. Recipients should not rely on this information. Any liabilities are hereby expressly disclaimed.

e. The information contained herein has been provided by the GCC but does not purport to be comprehensive or final. Recipients should not rely on the information. Neither the GCC nor any of its directors, officers, employees, agents, stakeholders or advisers make any representation or warranty as to, or accept any liability or responsibility in relation to, the adequacy, accuracy, reasonableness or completeness of the information provided as part of this document or any matter on which the information is based (including but not limited to loss or damage arising as a result of reliance by recipients on the information or any part of it). Any liabilities are hereby expressly disclaimed.

**ARUP**

Arup, One Albert Quay,  
Cork, T12 X8N6, Ireland  
Tel +353 (0)21 422 3200 Fax +353 (0)1 668 3169  
www.arup.ie

Client  
**Galway City Council**

Project Title  
**BusConnects Galway:  
Cross-City Link  
(University Road to Dublin Road)**

Drawing Title  
**General Arrangement**

Scale at A1  
**1:500 @ A1 ( 1:1000 @ A3)**

Role	Transport Infrastructure
Suitability	Planning
Arup Job No	<b>253352-00</b>
Name	<b>BCG-GA-00-08</b>
Rev	<b>PL01</b>

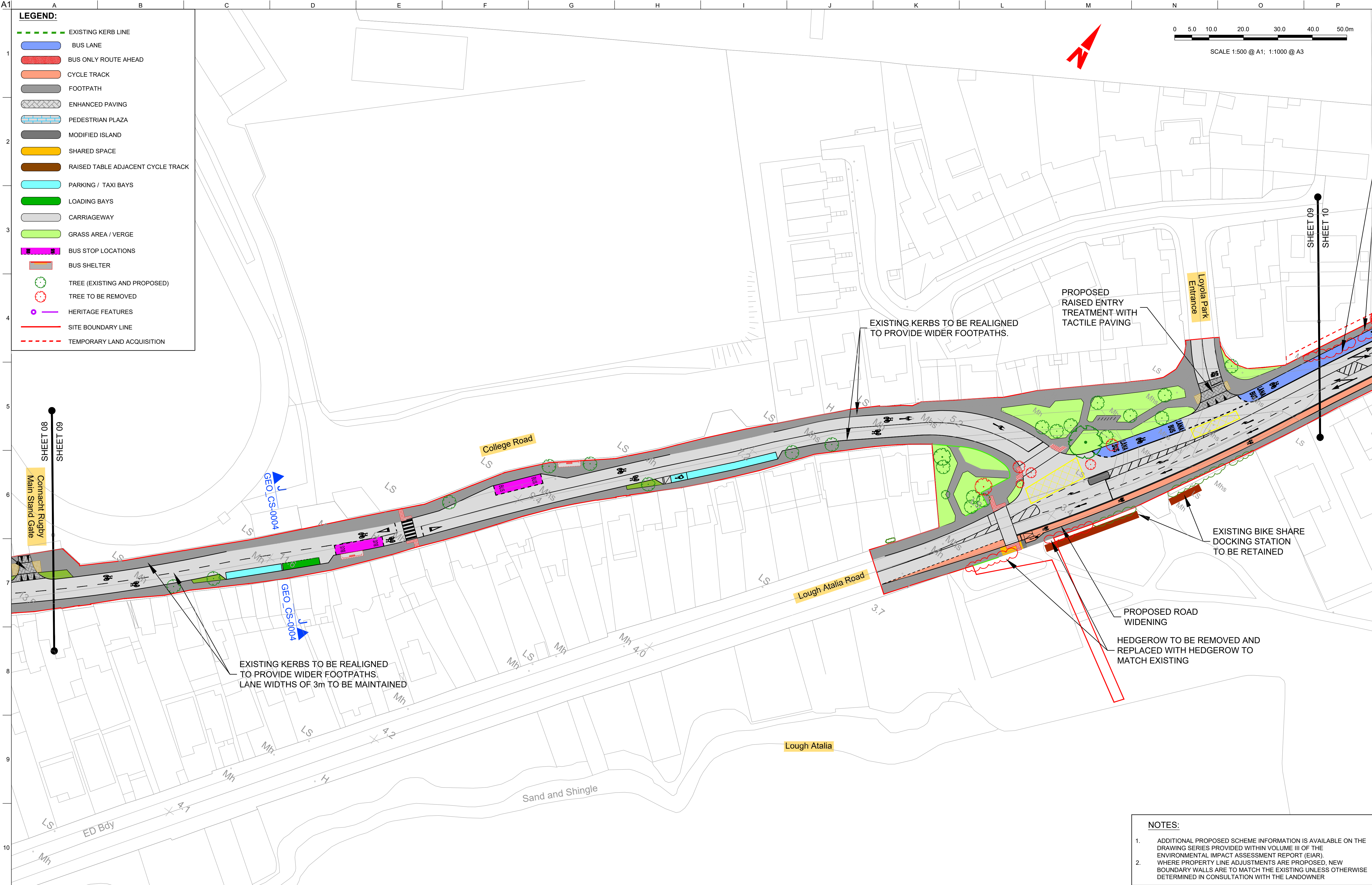
PL01	31/08/22	BM	BB	DMcD
Issue for Planning				
Rev	Date	By	Chkd	Appd

Map reproduced from Ordnance Survey Ireland Licence No. EN 0002822  
© Ordnance Survey Ireland/ Government of Ireland.

Do not scale

© Arup





LEGEND:

EXISTING KERB LINE

BUS LANE

BUS ONLY ROUTE AHEAD

CYCLE TRACK

FOOTPATH

ENHANCED PAVING

PEDESTRIAN PLAZA

MODIFIED ISLAND

SHARED SPACE

RAISED TABLE ADJACENT CYCLE TRACK

PARKING / TAXI BAYS

LOADING BAYS

CARRIAGEWAY

GRASS AREA / VERGE

BUS STOP LOCATIONS

BUS SHELTER

TREE (EXISTING AND PROPOSED)

TREE TO BE REMOVED

HERITAGE FEATURES

SITE BOUNDARY LINE

TEMPORARY LAND ACQUISITION

- NOTES:
1.

ADDITIONAL PROPOSED SCHEME INFORMATION IS AVAILABLE ON THE DRAWING SERIES PROVIDED WITHIN VOLUME III OF THE ENVIRONMENTAL IMPACT ASSESSMENT REPORT (EIAR).
2.

WHERE PROPERTY LINE ADJUSTMENTS ARE PROPOSED, NEW BOUNDARY WALLS ARE TO MATCH THE EXISTING UNLESS OTHERWISE DETERMINED IN CONSULTATION WITH THE LANDOWNER

Disclaimer

a. © Galway City Council (GCC) 2022. This drawing is confidential and the copyright in it is owned by GCC. This drawing must not be either loaned, copied or otherwise reproduced in whole or in part or used for any purpose without the prior permission of GCC.

b. This drawing is to be used for the design element identified in the titlebox. Other information shown is to be considered indicative only. The drawing is to be read in conjunction with all other relevant design drawings.

c. O.S. data used for plans are printed under © Ordnance Survey Ireland Government of Ireland. All rights reserved. Licence Number EN 0002822 (Arup). All elevations are in metres and relate to OSI Geoid Model (OSGM15) Mean High Water. All Co-ordinates are in Irish Transverse Mercator Grid (ITM) as defined by OSI active local GPS station.

d.

Information concerning the position of apparatus shown on this drawing is based on drawings supplied by the utility owners and/or the utility works contractor, whilst every care has been taken in the preparation of this drawing, positions should be taken as approximate and are intended for general guidance only and no representation is made by the GCC as to the accuracy, completeness, sufficiency or otherwise of this drawing and the position of the apparatus. The information contained herein does not purport to be comprehensive or final as the apparatus is subject to being altered and/or suspended. Recipients should not rely on this information. Any liabilities are hereby expressly disclaimed.

e.

The information contained herein has been provided by the GCC but does not purport to be comprehensive or final. Recipients should not rely on the information. Neither the GCC nor any of its directors, officers, employees, agents, stakeholders or advisers make any representation or warranty as to, or accept any liability or responsibility in relation to, the adequacy, accuracy, reasonableness or completeness of the information provided as part of this document or any matter on which the information is based (including but not limited to loss or damage arising as a result of reliance by recipients on the information or any part of it). Any liabilities are hereby expressly disclaimed.

ARUP

Arup, One Albert Quay,  
Cork, T12 X8N6, Ireland  
Tel +353 (0)21 422 3200 Fax +353 (0)1 668 3169  
www.arup.ie

Client

Galway City Council

Project Title

BusConnects Galway:  
Cross-City Link  
(University Road to Dublin Road)

Drawing Title

General Arrangement

Scale at A1

1:500 @ A1 ( 1:1000 @ A3)

Role

Transport Infrastructure

Suitability

Planning

Arup Job No

253352-00

Name

BCG-GA-00-09

Rev

PL01

PL01

31/08/22

BM

BB

DMcD

Issue for Planning

Rev

Date

By

Chkd

Appd

Map reproduced from Ordnance Survey Ireland Licence No. EN 0002822  
© Ordnance Survey Ireland/ Government of Ireland.

NTA

Údarás Náisiúnta Iompair

National Transport Authority

BusConnects GALWAY

TRANSFORMING CITY AND REGION

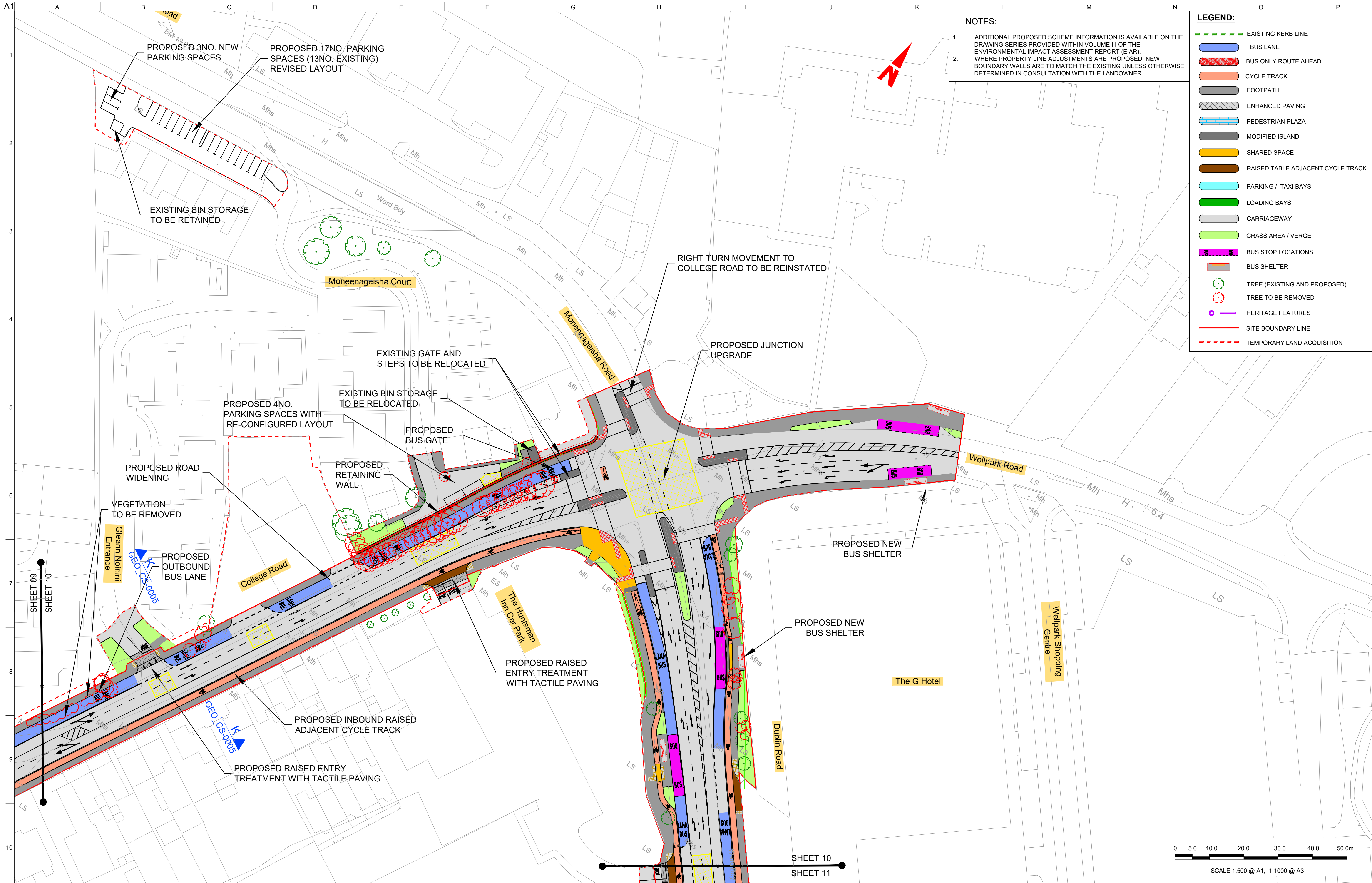
Project Ireland 2040

Building Ireland's Future

Do not scale

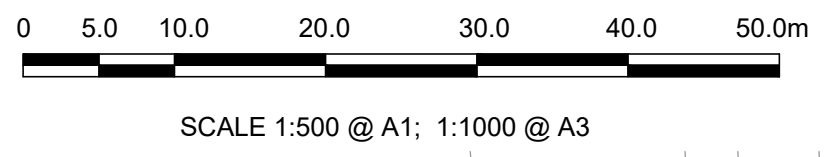
© Arup





**NOTES:**  
1. ADDITIONAL PROPOSED SCHEME INFORMATION IS AVAILABLE ON THE DRAWING SERIES PROVIDED WITHIN VOLUME III OF THE ENVIRONMENTAL IMPACT ASSESSMENT REPORT (EIA).  
2. WHERE PROPERTY LINE ADJUSTMENTS ARE PROPOSED, NEW BOUNDARY WALLS ARE TO MATCH THE EXISTING UNLESS OTHERWISE DETERMINED IN CONSULTATION WITH THE LANDOWNER

**LEGEND:**  
- - - - - EXISTING KERB LINE  
[Blue Box] BUS LANE  
[Red Box] BUS ONLY ROUTE AHEAD  
[Orange Box] CYCLE TRACK  
[Grey Box] FOOTPATH  
[Pattern Box] ENHANCED PAVING  
[Pattern Box] PEDESTRIAN PLAZA  
[Dark Grey Box] MODIFIED ISLAND  
[Yellow Box] SHARED SPACE  
[Brown Box] RAISED TABLE ADJACENT CYCLE TRACK  
[Light Blue Box] PARKING / TAXI BAYS  
[Green Box] LOADING BAYS  
[Light Green Box] GRASS AREA / VERGE  
[Pink Box] BUS STOP LOCATIONS  
[Red Box] BUS SHELTER  
[Green Circle] TREE (EXISTING AND PROPOSED)  
[Red Circle] TREE TO BE REMOVED  
[Purple Circle] HERITAGE FEATURES  
[Red Line] SITE BOUNDARY LINE  
[Dashed Red Line] TEMPORARY LAND ACQUISITION



**Disclaimer**

a. © Galway City Council (GCC) 2022. This drawing is confidential and the copyright in it is owned by GCC. This drawing must not be either loaned, copied or otherwise reproduced in whole or in part or used for any purpose without the prior permission of GCC.

b. This drawing is to be used for the design element identified in the titlebox. Other information shown is to be considered indicative only. The drawing is to be read in conjunction with all other relevant design drawings.

c. O.S. data used for plans are printed under © Ordnance Survey Ireland Government of Ireland. All rights reserved. Licence Number EN 0002822 (Arup). All elevations are in metres and relate to OSI Geoid Model (OSGM15) Malin Head. All Co-ordinates are in Irish Transverse Mercator Grid (ITM) as defined by OSI active local GPS station.

d. Information concerning the position of apparatus shown on this drawing is based on drawings supplied by the utility owners and/or the utility works contractor, whilst every care has been taken in the preparation of this drawing, positions should be taken as approximate and are intended for general guidance only and no representation is made by the GCC as to the accuracy, completeness, sufficiency or otherwise of this information. Recipients should not rely on this information. Any liabilities are hereby expressly disclaimed.

e. The information contained herein has been provided by the GCC but does not purport to be comprehensive or final. Recipients should not rely on the information. Neither the GCC nor any of its directors, officers, employees, agents, stakeholders or advisers make any representation or warranty as to, or accept any liability or responsibility in relation to, the adequacy, accuracy, reasonableness or completeness of the information provided as part of this document or any matter on which the information is based (including but not limited to loss or damage arising as a result of reliance by recipients on the information or any part of it). Any liabilities are hereby expressly disclaimed.

**NTA**  
Údarás Náisiúnta Iompair  
National Transport Authority

PL01	31/08/22	BM	BB	DMcD
Issue for Planning				
Rev	Date	By	Chkd	Appd

**ARUP**

Arup, One Albert Quay,  
Cork, T12 X8N6, Ireland  
Tel +353 (0)21 422 3200 Fax +353 (0)1 668 3169  
www.arup.ie

Client  
**Galway City Council**

Project Title  
**BusConnects Galway: Cross-City Link (University Road to Dublin Road)**

**BUS CONNECTS GALWAY**

**Project Ireland 2040**  
Building Ireland's Future

Drawing Title  
**General Arrangement**

Sheet 10 of 13

Scale at A1  
**1:500 @ A1 ( 1:1000 @ A3)**

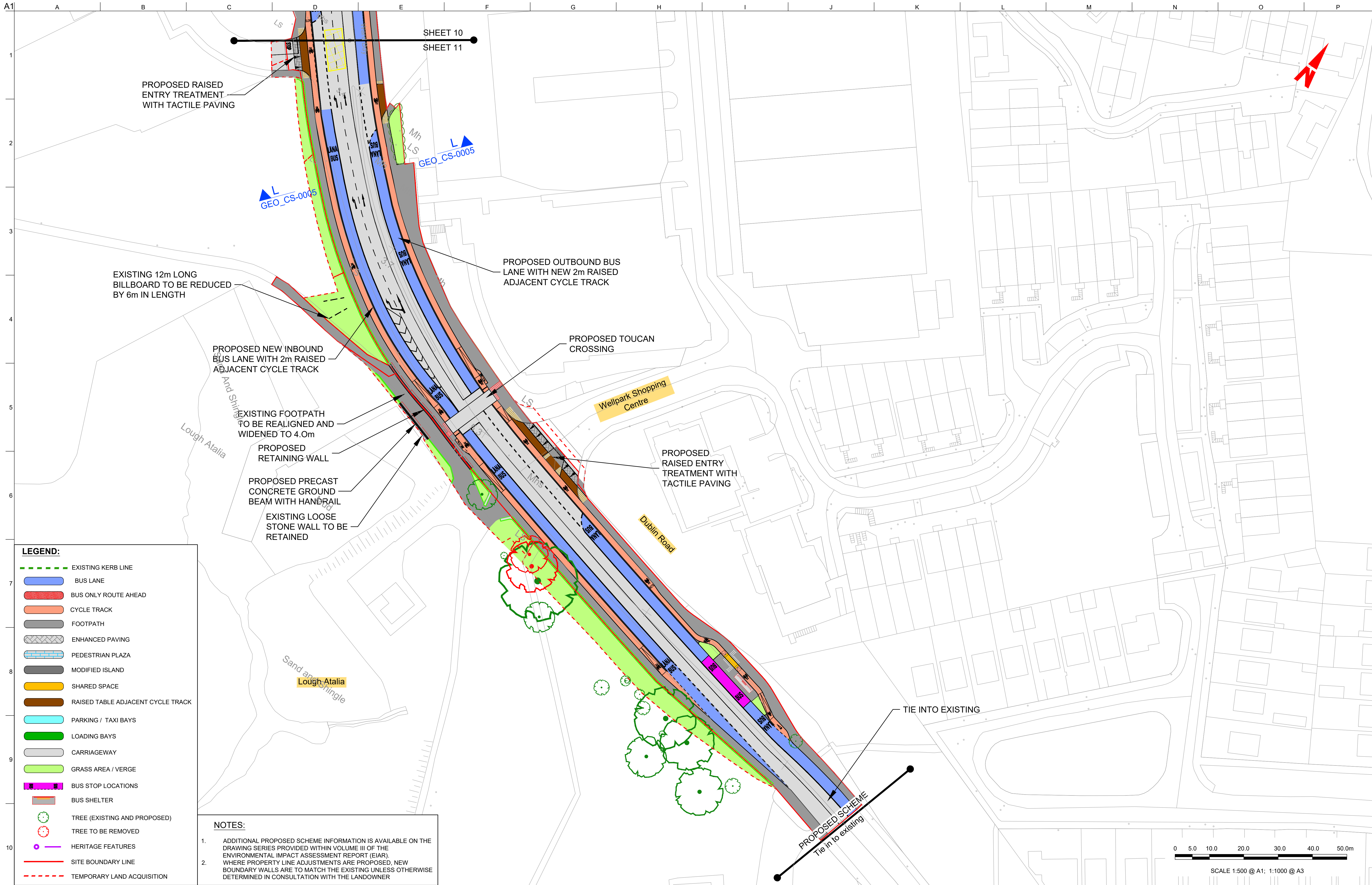
Role <b>Transport Infrastructure</b>	Rev <b>PL01</b>
Suitability <b>Planning</b>	
Arup Job No <b>253352-00</b>	
Name <b>BCG-GA-00-10</b>	

Do not scale

Map reproduced from Ordnance Survey Ireland Licence No. EN 0002822  
© Ordnance Survey Ireland/ Government of Ireland.

© Arup





UNSCHEMTER

a. © Galway City Council (GCC) 2022. This drawing is confidential and the copyright in it is owned by GCC. This drawing must not be either loaned, copied or otherwise reproduced in whole or in part or used for any purpose without the prior permission of GCC.

b. This drawing is to be used for the design element identified in the titlebox. Other information shown is to be considered indicative only. The drawing is to be read in conjunction with all other relevant design drawings.

c. O.S. data used for plans are printed under © Ordnance Survey Ireland Government of Ireland. All rights reserved. Licence Number EN 0002822 (Arup). All elevations are in metres and relate to OSI Geoid Model (OSGM15) Mean Sea Level. All Co-ordinates are in Irish Transverse Mercator Grid (ITM) as defined by OSI active local GPS station.

d. Information concerning the position of apparatus shown on this drawing is based on drawings supplied by the utility owners and/or the utility works contractor, whilst every care has been taken in the preparation of this drawing, positions should be taken as approximate and are intended for general guidance only and no representation is made by the GCC as to the accuracy, completeness, sufficiency or otherwise of this drawing and the position of the apparatus. The information contained herein does not purport to be comprehensive or final as the apparatus is subject to being altered and/or suspended. Recipients should not rely on this information. Any liabilities are hereby expressly disclaimed.

e. The information contained herein has been provided by the GCC but does not purport to be comprehensive or final. Recipients should not rely on the information. Neither the GCC nor any of its directors, officers, employees, agents, stakeholders or advisers make any representation or warranty as to, or accept any liability or responsibility in relation to, the adequacy, accuracy, reasonableness or completeness of the information provided as part of this document or any matter on which the information is based (including but not limited to loss or damage arising as a result of reliance by recipients on the information or any part of it). Any liabilities are hereby expressly disclaimed.

NTA

Údarás Náisiúnta Iompair

National Transport Authority

PL01	31/08/22	BM	BB	DMcD
Issue for Planning				
Rev	Date	By	Chkd	Appd

ARUP

Arup, One Albert Quay,  
Cork, T12 X8N6, Ireland  
Tel +353 (0)21 422 3200 Fax +353 (0)1 668 3169  
www.arup.ie

Client

Galway City Council

Project Title

BusConnects Galway:  
Cross-City Link  
(University Road to Dublin Road)

Drawing Title

General Arrangement

Sheet 11 of 13

Scale at A1

1:500 @ A1 ( 1:1000 @ A3)

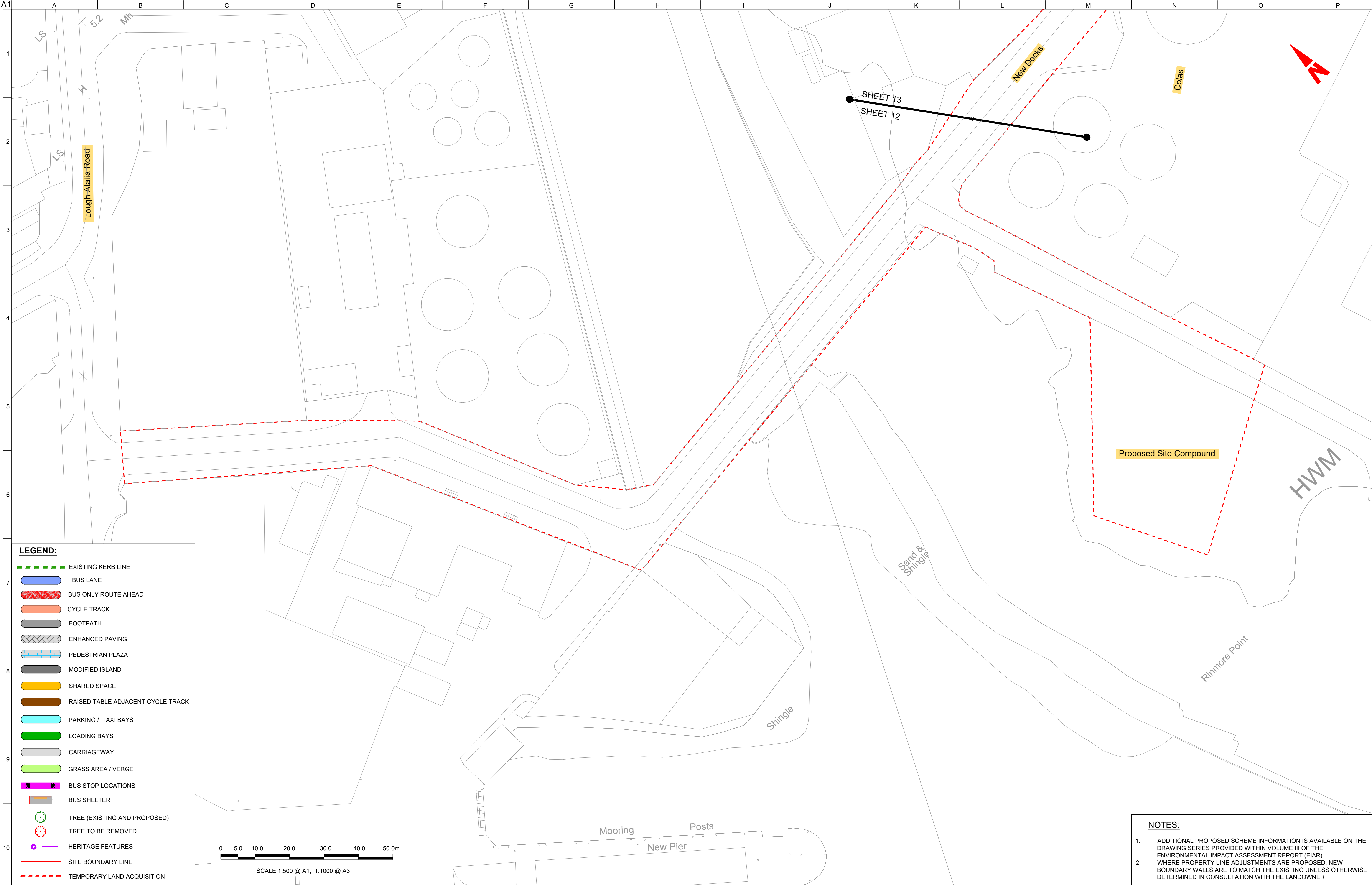
Role	Transport Infrastructure
Suitability	Planning
Arup Job No	253352-00
Name	BCG-GA-00-11
Rev	PL01

Do not scale

Map reproduced from Ordnance Survey Ireland Licence No. EN 0002822  
© Ordnance Survey Ireland/ Government of Ireland.

© Arup





UNSCHEMED

a. © Galway City Council (GCC) 2022. This drawing is confidential and the copyright in it is owned by GCC. This drawing must not be either loaned, copied or otherwise reproduced in whole or in part or used for any purpose without the prior permission of GCC.

b. This drawing is to be used for the design element identified in the titlebox. Other information shown is to be considered indicative only. The drawing is to be read in conjunction with all other relevant design drawings.

c. O.S. data used for plans are printed under © Ordnance Survey Ireland Government of Ireland. All rights reserved. Licence Number EN 0002822 (Anup). All elevations are in metres and relate to OSI Geoid Model (OSGM15) Mean High Water. All Co-ordinates are in Irish Transverse Mercator Grid (ITM) as defined by OSI active local GPS station.

d. Information concerning the position of apparatus shown on this drawing is based on drawings supplied by the utility owners and/or the utility works contractor, whilst every care has been taken in the preparation of this drawing, positions should be taken as approximate and are intended for general guidance only and no representation is made by the GCC as to the accuracy, completeness, sufficiency or otherwise of this drawing and the position of the apparatus. The information contained herein does not purport to be comprehensive or final as the apparatus is subject to being altered and/or superseded. Recipients should not rely on this information. Any liabilities are hereby expressly disclaimed.

e. The information contained herein has been provided by the GCC but does not purport to be comprehensive or final. Recipients should not rely on the information. Neither the GCC nor any of its directors, officers, employees, agents, stakeholders or advisers make any representation or warranty as to, or accept any liability or responsibility in relation to, the adequacy, accuracy, reasonableness or completeness of the information provided as part of this document or any matter on which the information is based (including but not limited to loss or damage arising as a result of reliance by recipients on the information or any part of it). Any liabilities are hereby expressly disclaimed.

ARUP

Arup, One Albert Quay,  
Cork, T12 X8N6, Ireland  
Tel +353 (0)21 422 3200 Fax +353 (0)1 668 3169  
www.arup.ie

Client

Galway City Council

Project Title

BusConnects Galway:  
Cross-City Link  
(University Road to Dublin Road)

BUS CONNECTS GALWAY

TRANSFORMING CITY AND REGION

Project Ireland 2040

Building Ireland's Future

Drawing Title

General Arrangement

Sheet 12 of 13

Scale at A1

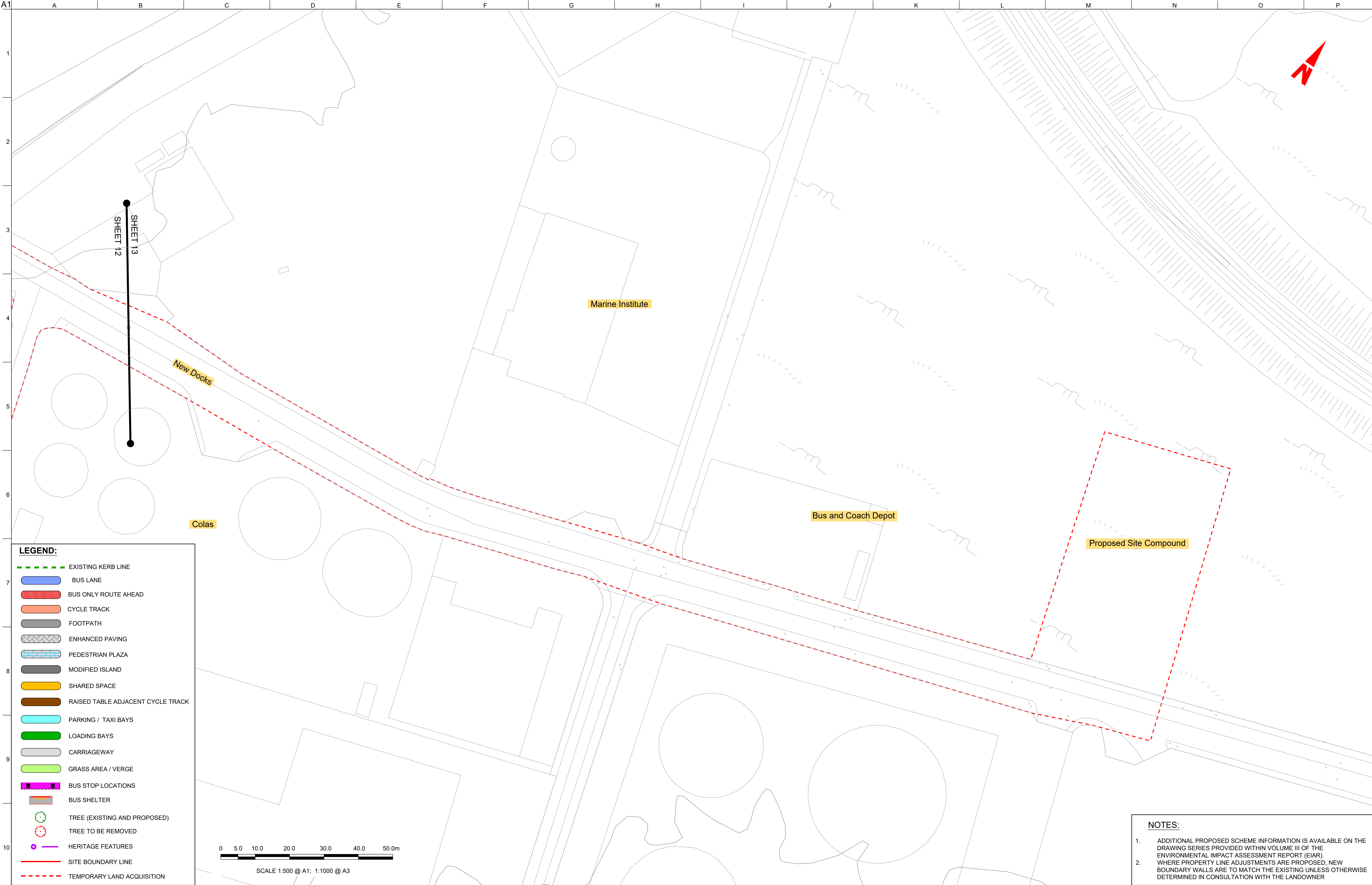
1:500 @ A1 ( 1:1000 @ A3)

Role	Transport Infrastructure
Suitability	Planning
Arup Job No	253352-00
Name	BCG-GA-00-12
Rev	PL01

Map reproduced from Ordnance Survey Ireland Licence No. EN 0002822  
© Ordnance Survey Ireland/ Government of Ireland.

© Arup





LEGEND:

EXISTING KERB LINE

BUS LANE

BUS ONLY ROUTE AHEAD

CYCLE TRACK

FOOTPATH

ENHANCED PAVING

PEDESTRIAN PLAZA

MODIFIED ISLAND

SHARED SPACE

RAISED TABLE ADJACENT CYCLE TRACK

PARKING / TAXI BAYS

LOADING BAYS

CARRIAGEWAY

GRASS AREA / VERGE

BUS STOP LOCATIONS

BUS SHELTER

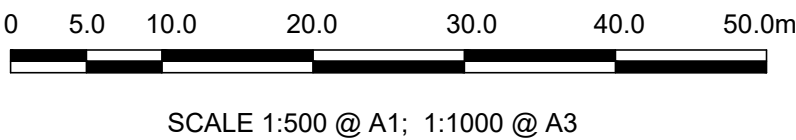
TREE (EXISTING AND PROPOSED)

TREE TO BE REMOVED

HERITAGE FEATURES

SITE BOUNDARY LINE

TEMPORARY LAND ACQUISITION



- NOTES:
1.

ADDITIONAL PROPOSED SCHEME INFORMATION IS AVAILABLE ON THE DRAWING SERIES PROVIDED WITHIN VOLUME III OF THE ENVIRONMENTAL IMPACT ASSESSMENT REPORT (EIAR).
2.

WHERE PROPERTY LINE ADJUSTMENTS ARE PROPOSED, NEW BOUNDARY WALLS ARE TO MATCH THE EXISTING UNLESS OTHERWISE DETERMINED IN CONSULTATION WITH THE LANDOWNER

UNSCHEM

a. © Galway City Council (GCC) 2022. This drawing is confidential and the copyright in it is owned by GCC. This drawing must not be either loaned, copied or otherwise reproduced in whole or in part or used for any purpose without the prior permission of GCC.

b. This drawing is to be used for the design element identified in the titlebox. Other information shown is to be considered indicative only. The drawing is to be read in conjunction with all other relevant design drawings.

c. O.S. data used for plans are printed under © Ordnance Survey Ireland Government of Ireland. All rights reserved. Licence Number EN 0002822 (Arup). All elevations are in metres and relate to OSI Geoid Model (OSGM15) Malin Head. All Co-ordinates are in Irish Transverse Mercator Grid (ITM) as defined by OSI active local GPS station.

d. Information concerning the position of apparatus shown on this drawing is based on drawings supplied by the utility owners and/or the utility works contractor, whilst every care has been taken in the preparation of this drawing, positions should be taken as approximate and are intended for general guidance only and no representation is made by the GCC as to the accuracy, completeness, sufficiency or otherwise of this drawing and the position of the apparatus. The information contained herein does not purport to be comprehensive or final as the apparatus is subject to being altered and/or superseded. Recipients should not rely on this information. Any liabilities are hereby expressly disclaimed.

e. The information contained herein has been provided by the GCC but does not purport to be comprehensive or final. Recipients should not rely on the information. Neither the GCC nor any of its directors, officers, employees, agents, stakeholders or advisers make any representation or warranty as to, or accept any liability or responsibility in relation to, the adequacy, accuracy, reasonableness or completeness of the information provided as part of this document or any matter on which the information is based (including but not limited to loss or damage arising as a result of reliance by recipients on the information or any part of it). Any liabilities are hereby expressly disclaimed.

ARUP

Arup, One Albert Quay,  
Cork, T12 X8N6, Ireland  
Tel +353 (0)21 422 3200 Fax +353 (0)1 668 3169  
www.arup.ie

Client

Galway City Council

Project Title

BusConnects Galway:  
Cross-City Link  
(University Road to Dublin Road)

Drawing Title

General Arrangement

Sheet 13 of 13

Scale at A1

1:500 @ A1 ( 1:1000 @ A3)

Role	Transport Infrastructure
Suitability	Planning
Arup Job No	253352-00
Name	BCG-GA-00-13
Rev	PL01

Do not scale

Map reproduced from Ordnance Survey Ireland Licence No. EN 0002822  
© Ordnance Survey Ireland/ Government of Ireland.

© Arup





National Transport Authority  
Dún Scéine  
Harcourt Lane  
Dublin 2  
D02 WT20



Comhairle Cathrach na Gaillimhe  
Galway City Council



Project Ireland 2040  
Building Ireland's Future